



**Qognify**  
**Situator**

ENTERPRISE  
INCIDENT MANAGEMENT  
**FOR CORPORATE  
CAMPUSES**

# MEETING YOUR MOST PRESSING NEEDS

**Qognify Situator**, the leading enterprise incident management solution, helps you to create a safe and secure environment for people, improve effectiveness and efficiency, and increase the sustainability of your campus. It is a powerful tool to address the EHS-related challenges (Environment, Health & Safety/ Security) of your organization by correlating and visualizing information in real-time and coordinating a coherent response.

## INTEGRATIONS OPERATING FROM A SINGLE PANE OF GLASS

One of the core capabilities of **Qognify Situator** is its ability to create enhanced situational awareness by retrieving and combining information from a wide range of systems and visualizing it in one unified user interface. For example, it combines standard physical security systems with building management and backend billing systems to monitor the operational costs of a campus. To simplify the integration of these many different technologies and brands, **Qognify Situator** is built on a driver-based architecture and standardized interfaces, with hundreds of gateways already available. This allows control room personnel as well as incident responders on site to quickly identify and validate relevant situations, to assess their severity, and to coordinate an effective response.



### Safety & Security

- Video Surveillance
- Video Analysis
- Access Control
- Intrusion
- Fire



### Buildings

- Building Management System
- HVAC
- Campus Billing Systems



### Communications

- PA Platforms
- Intercom Platforms
- Emergency Dispatch Systems

# WORKFLOWS

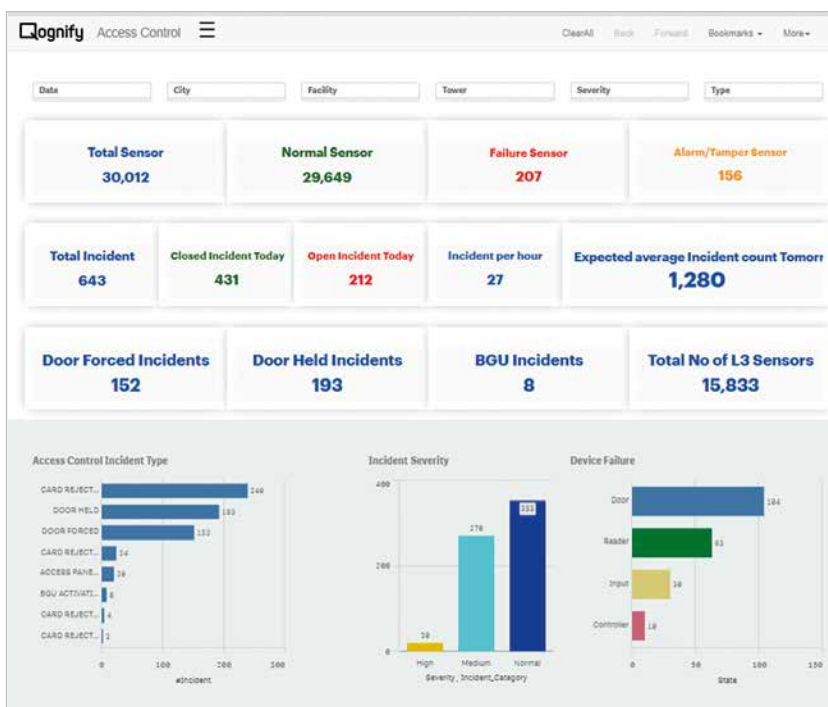
## MANAGING AN EFFECTIVE RESPONSE

An appropriate and orchestrated response is the best way to minimize the impact of an incident.

**Qognify Situator** provides powerful tools to achieve that and to speed up the entire process of handling an incident. This starts with the automatic initiation of an incident by a subsystem or sensor. Dynamic workflows then guide the operators through the entire response process and tell them what to do next, depending on how the incident is progressing. Customizable forms make sure that all incident-related information is recorded in a structured and standardized way. Since all steps are tracked and documented, the actual response can be assessed and compared with defined KPIs with hindsight.

# DASHBOARDS

## INFORMATION AT A GLANCE



**Qognify Situator** provides you with relevant visual information and KPIs in customizable, actionable dashboards – allowing you to stay on top of all relevant situations unfolding.

## EXAMPLE FIRE DETECTED IN A BUILDING



## SAFEGUARDING AGAINST FIRES

- In case of smoke being detected in one of the buildings, **Qognify Situator** automatically creates a new incident 'Smoke detected' and notification pop-up is presented to the control room operator
- The operator acknowledges the incident and the relevant SOP gets triggered and the related cameras and corresponding floor plans and maps are visualized in the control room.
- As part of the procedure, the operator is asked to verify if this is an actual or false alarm by viewing the respective video feed from nearby cameras
- If the alarm turns out to be false, unnecessary deployment of personnel is avoided – thus saving costs and maintaining the ability to respond to really important incidents.
- The system will present dynamic SOPs based on the operators' input to guide the security personell through the incident.
- The integration with notification systems helps to call in additional emergency services (e.g. the fire brigade) or make announcements with the description of safe evacuation routes using the PA (also automatically, if permitted by local legislation).



### Fire Alarm Integration

- Integration of various fire alarm systems
- Back integration with notification systems or a PA
- Back integration with access control to enable access for emergency responders
- Incident reporting option for the relevant stakeholders

## EXAMPLE ACCESS CONTROL VIOLATION

# PROTECTING ACCESS TO BUILDINGS AND FACILITIES

- Upon receiving a door alarm (e.g. „door forced open“), **Qognify Situator** creates an incident and displays relevant maps, floor plans and cameras.
- In addition to the live video of the nearby cameras, recorded footage from 30 seconds before the event is displayed. This helps the operator to understand how the situation has been developing.
- Based on this information, security personnel in the control room can determine whether the alarm is real or false. This avoids unnecessary staff deployments and saves costs.
- If the alarm is real, the nearest responder will be dispatched to investigate the event and report back to the control room.
- Based on pre-defined dynamic workflows and on-site feedback, the control room operators are guided through the response process.



### Access Control Integration

- Integration of many different access control systems
- Support for various door states and events
- Bi-directional integration (control doors)
- Access to badge-holder database



## EXAMPLE BUILDING MANAGEMENT



## INTEGRATION AND SMART AUTOMATION

- A bidirectional integration allows operators to create/read/write/update data in the building management system.
- Sensor information such as sensor status, events and alarms or even malfunctions are collected and visualized in **Qognify Situator** – for a wide range of different sensor types.
- **Qognify Situator** can monitor building management sensors and components centrally (communication, batteries, power connection) and receive alerts for any deviation from defined parameters, e.g. also for monitoring server room temperature and starting a workflow in case of overheating.
- **Qognify Situator** helps your smart buildings to be turned into even smarter facilities – e.g. by creating conjunctions between different technologies and sensor types and automating workflows: As an example, **Qognify Situator** can be used to determine the ideal schedule to ramp up the air conditioning by processing occupancy information from the building's access control system.



### Building Management Integration

- Integration of a large number of BMS
- Helps to significantly reduce campus operation costs
- Improves comfort, security and safety of employees
- Important tool to achieve enterprise sustainability goals

# QOGNIFY SITUATOR

## YOUR BENEFITS

### AN ENTERPRISE-CLASS PLATFORM TO MANAGE PHYSICAL SECURITY AND OPERATIONS



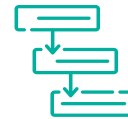
#### **SINGLE PANE OF GLASS**

Combine information and events from many different systems and sensors in one platform – to better utilize existing investments with a unified user experience.



#### **OPEN INTEGRATION PLATFORM**

Easily connect to many different 3rd party systems from multiple manufacturers – thanks to a driver-based, standardized approach



#### **ENHANCED WORKFLOW CAPABILITIES**

Use an information-driven platform to improve response through dynamic digitized workflows and operating procedures.



#### **IMPROVED SITUATIONAL AWARENESS**

Watch situations unfold in real time and understand their full impact immediately – to coordinate a proper response and to mitigate the risks.



#### **COMMUNICATION & COORDINATION**

Delivering information to the right people across departments or organizations – in the control room as well as in the field with a mobile app.



#### **DASHBOARDS & REPORTING**

Customizable, web-based dashboards allow for the display of the situation and system wide data that can be used for detailed reports to management.



## QOGNIFY. SAFEGUARDING YOUR WORLD.

Qognify maximizes the outcomes of security and business strategies with its innovative portfolio of video and enterprise incident management software platforms. As a trusted advisor, Qognify serves thousands of customers who place a premium on physical security, safety and operations. Our solutions serve a variety of industries all around the world, work to mitigate risks, increase security and optimize workflows. Headquartered in Pearl River, New York, Qognify operates major development hubs in Germany, Israel and the United States, with sales and support offices around the globe.



[www.qognify.com](http://www.qognify.com)

© All rights reserved to Qognify Limited and its affiliates ("Qognify"). For the full list of Qognify's trademarks, please visit [www.qognify.com/trademarks](http://www.qognify.com/trademarks). All other marks used are the property of their respective proprietor.

