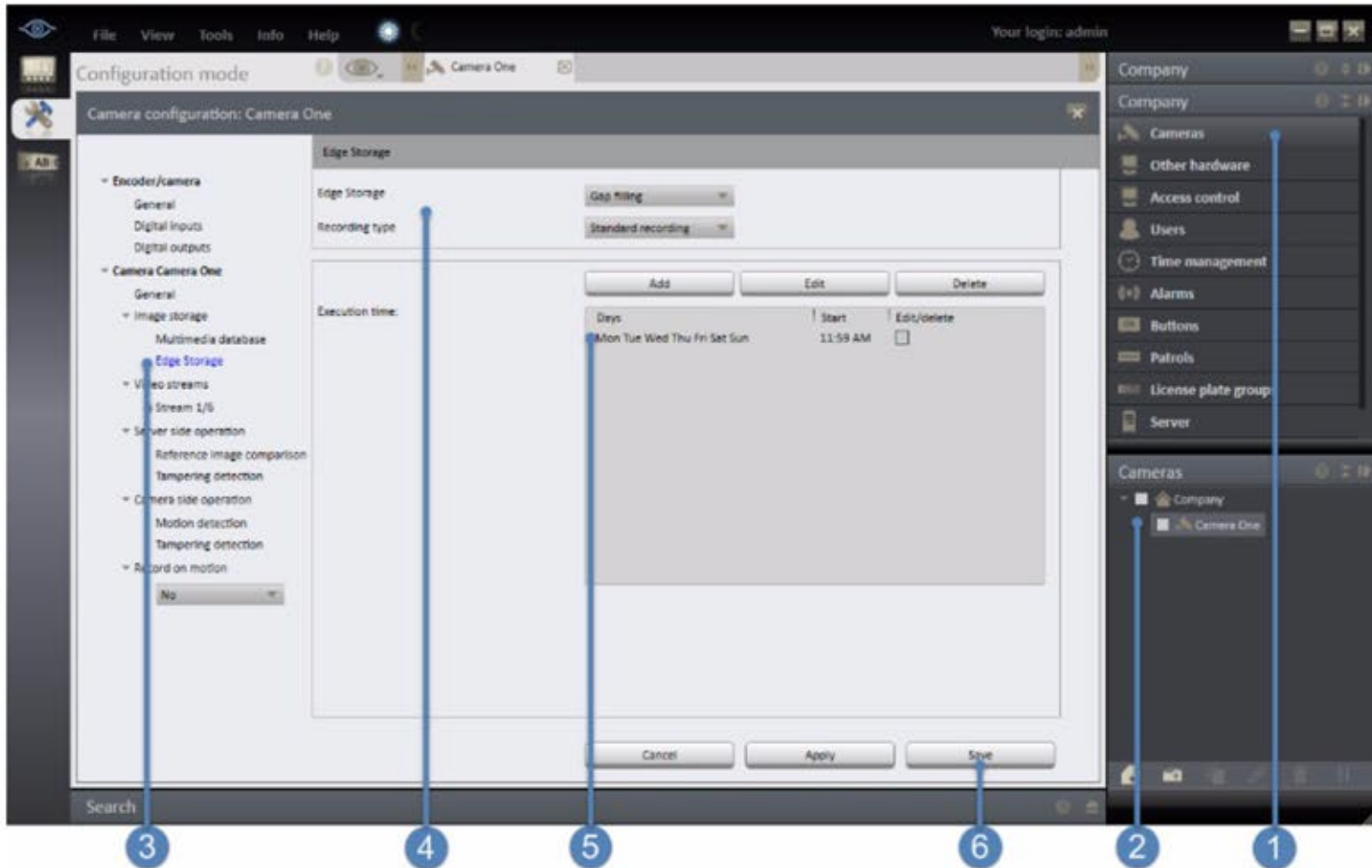


How to Configure Edge Storage

Ocularis Recorder 5.0 has the ability to import video stored on the camera, or Edge Storage, at a predetermined time. This is beneficial to help protect against network outage between the recording server and the camera. Please note: this option is available in Ocularis Recorder Ultimate and Enterprise only.

Be sure to configure the camera properly for edge storage in the camera web interface



Log into Ocularis Recorder Manager and under Company click 'Cameras' (1) followed by the camera that edge storage it so be setup on (2).

With the camera open in the Configuration Pane, select 'Edge Storage' located under the 'Image Storage' section. (3)

Set the 'Edge Storage' option to 'Gap Filling' (4).

Currently, only 'Gap Filling' is supported. 'Edge Storage Import', the ability to manually import the edge video via Ocularis Client, will be available in a future release. Also, 'Alarm Recording' is not an option. 'Standard Recording' needs to be enabled (under the 'Multimedia Database' section) for 'Gap Filling' to function properly.

Configure a time for Ocularis Recorder to pull any missing video from the camera. Though each entry can only have one designated time, you can setup multiple entries. If you want Ocularis Recorder to check every hour, create an entry for every hour. Note that whatever time is selected the listed time will be one minute prior. (5)

Click Save to save the settings and close the camera configuration. (6)