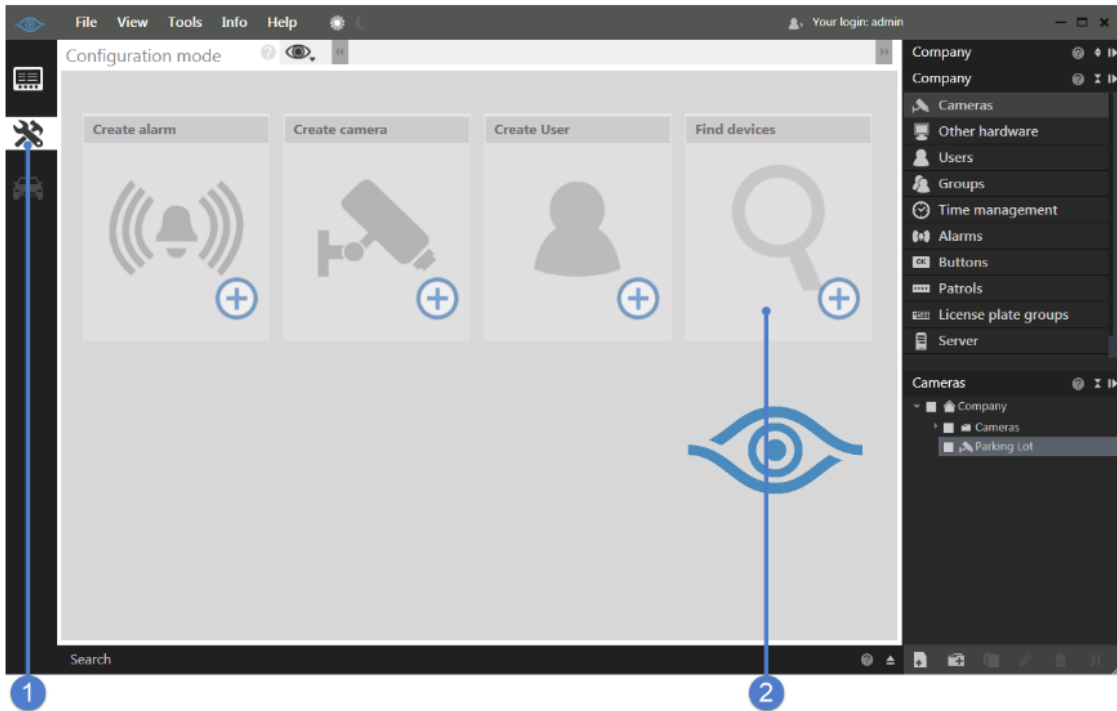


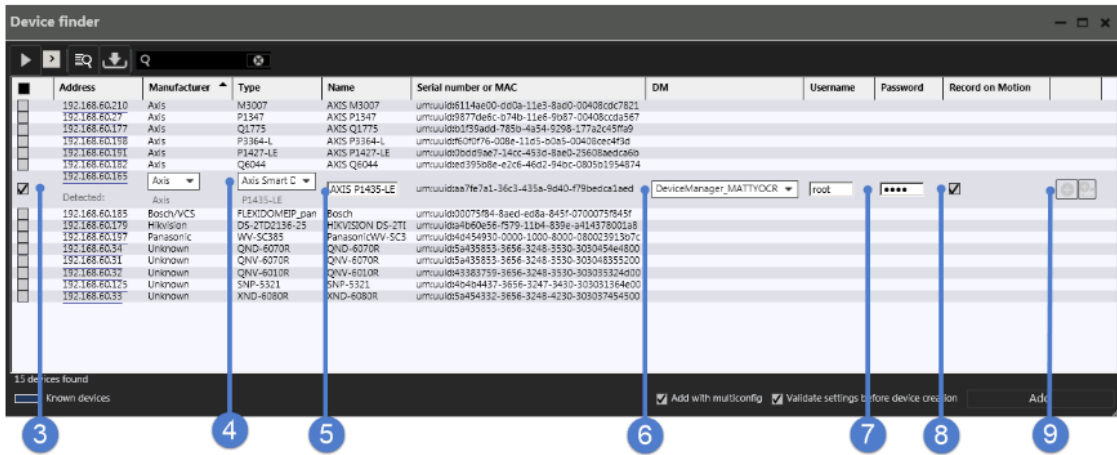
Using Find Devices to Add Devices

With Ocularis Recorder there are two ways to add a new camera. Cameras can be manually added or Ocularis Recorder can find cameras on the network and you pick and choose which ones to add. This document walks through the steps of using the Find Devices option for adding cameras.

The system can only scan the layer 2 network where this task is being run.



Click on 'Configuration mode' (1) and then Find Devices (2).



The process can take a few minutes as it scans the network looking for devices. Once complete, it will present a list similar to the one above.

Click the check box next to the device(s) you wish to add (3). This will expand that camera with more details.

Select the driver to be used for this device. (4)

Give the device a name if you want to change the default name. (5)

Select the Device Manager server for the video to be record. (6)

Enter the correct username and password for the device. (7)

Check the 'Record on Motion' box if you wish to enable the camera to record on motion (8). When adding multiple cameras at once, setting the cameras to record on motion here can save time over individually enabling it.

Click Add to add the device(s) to the system. (9)