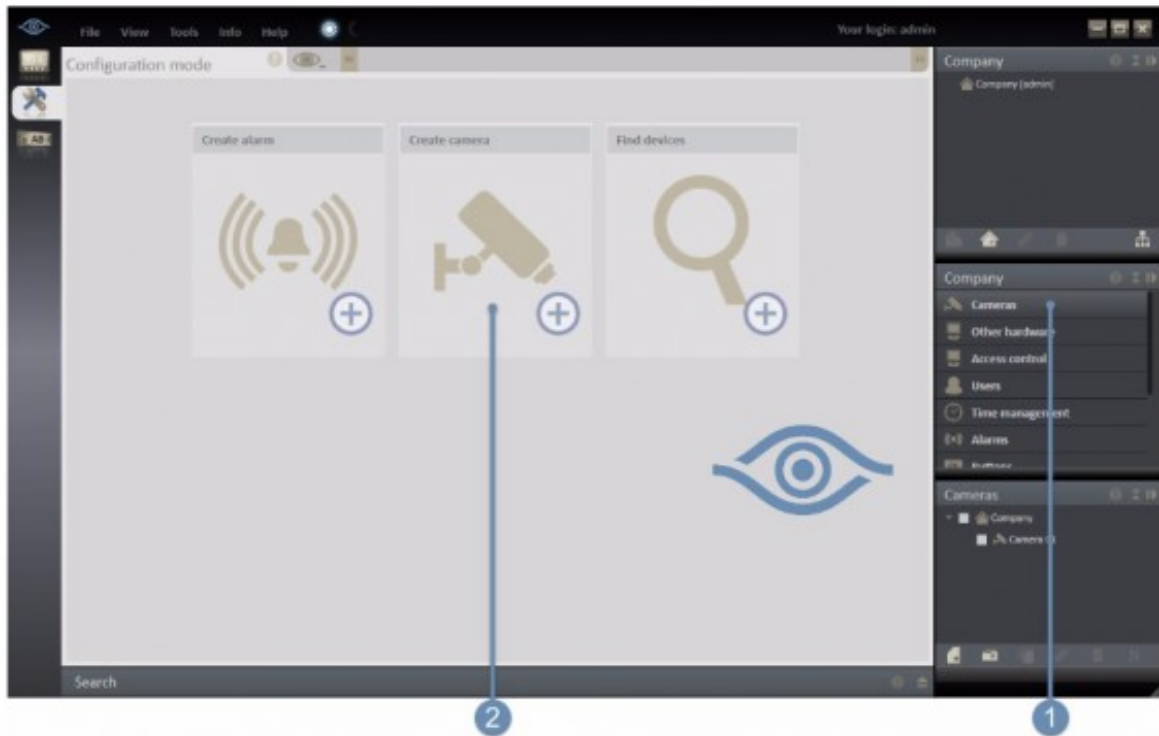


# Manually Adding a Device

With Ocularis Recorder there are two ways to add a new Device. Devices can be manually added or Ocularis Recorder can find devices on the network and you pick and choose which ones to add. This document will walk through the steps of manually adding a device.

Please note that the "Find Devices" process runs on the machine the Manager being used on. Please make sure this machine has access to the camera network so the devices are found properly.

Open the Ocularis Recorder Manager.



Click on Cameras under Company (1) and then Create Camera (2).

- a)** Give the device a name.
- b)** Select the device manufacturer.
- c)** Select the device model
- d)** Check the box to be able to enter in username and password for device.
- e)** Device user name.
- f)** The password for the user used in (e).
- g)** IP address of the device. If the port is other then 80, change that as well.
- h)** Choose the Device Manager you want the video from the device saved to.

Click OK when finished.