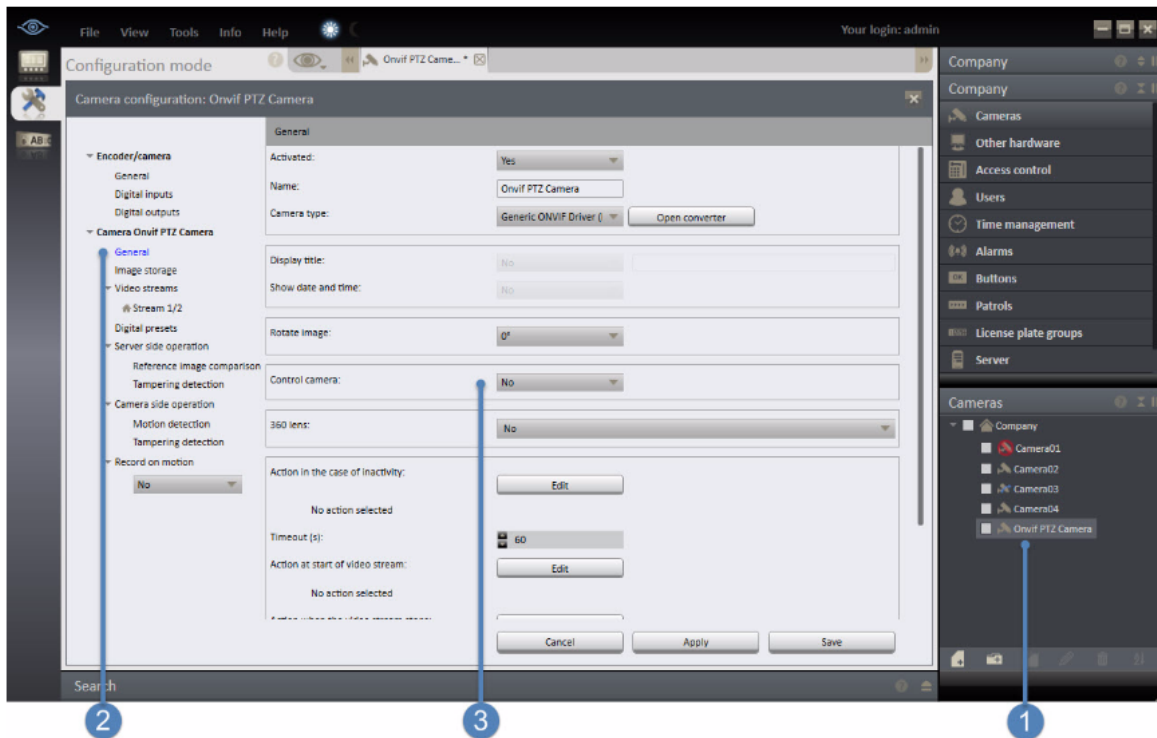


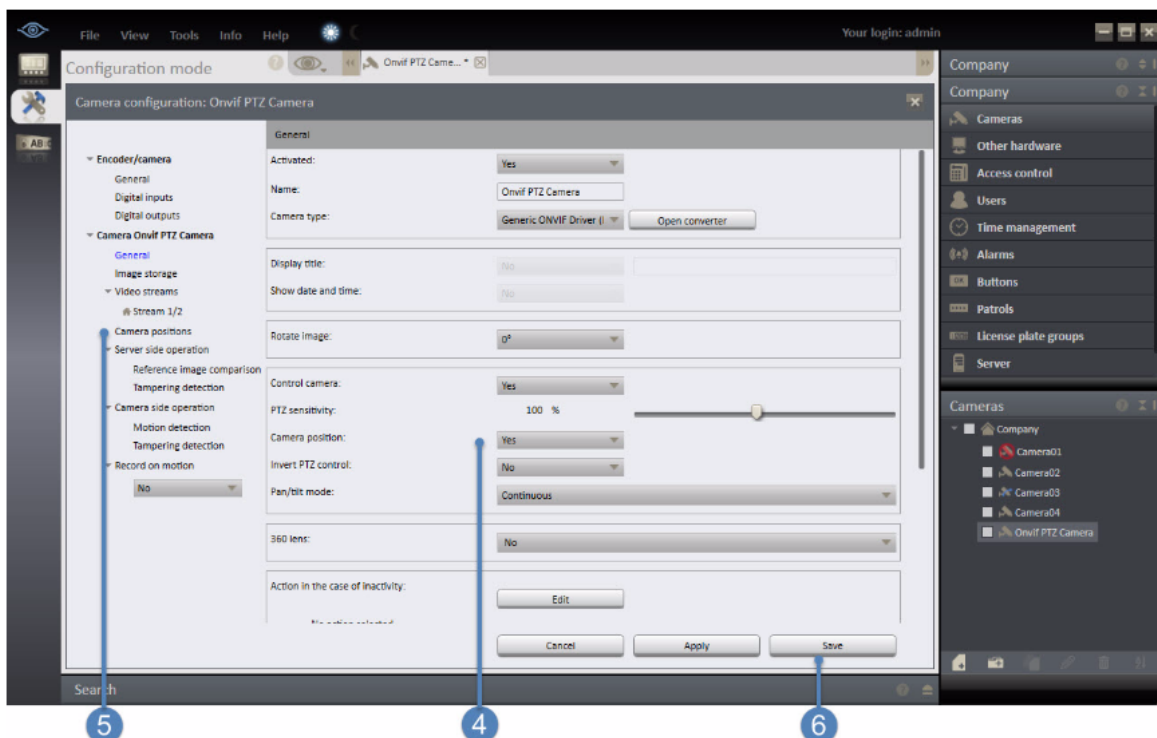
How to Enable PTZ Control on a Smart Driver Camera

When adding a PTZ camera to Ocularis Recorder 5.0 with a Smart Driver, there are a couple of settings that need to be configured to enable PTZ functionality. This document will walk through these steps.



Inside the Ocularis Recorder Manager click on the camera in question (1) then 'General' (2).

Change the 'Control camera' option (3) from 'No' to 'Yes'. This tells the software the device has PTZ capabilities and displays additional PTZ options as seen in the image below.



Select 'Yes' for 'Camera position' (4). This option instructs the application to allow software configured presets.

Presets can now be created in the 'Camera positions' section (5). Please see 'How to Setup PTZ Presets and Patrolling' for more information on presets and patrols.

Once finished, click 'Save' to save the new settings and exit the camera configuration page. (6)